

2022-2023 Annual Report



Brampton Caledon
COMMUNITY LIVING
INTÉGRATION
COMMUNAUTAIRE
Brampton Caledon

Message from the President & Executive Director

As we reflect on the successes and challenges faced by Brampton Caledon Community Living (BCCL) this past year, it is refreshing to finally feel like we are moving forward after three long years of closures, restrictions, and much uncertainty. We are tremendously grateful to people supported for their resilience, employees for their dedication and family members for their patience.

BCCL has had many successes this past year. A quarterly newsletter was created to spread some joy and stay connected. More in-person day support and respite programs opened. Some day support initiatives were redesigned to provide more choice. A new home in Caledon opened in response to residential expansion. BCCL successfully recruited 70 qualified employees this past fiscal year to replenish vacancies created during the pandemic. The Self-advocates committee regained momentum and many other in-person activities also resumed. Important improvements were made to the information technology infrastructure to strengthen cyber security and enhance internal efficiencies. The 2022-2023 fiscal year ended with BCCL once again coming in with a balanced budget.

However, we recognize that there is still much work to be done. The pandemic has highlighted the urgent need for increased funding and resources to support vulnerable individuals and their families. As we move forward into the next fiscal year, we will continue to advocate for these critical resources and work to strengthen our partnerships with local government and community organizations.

The board and management reviewed the strategic plan and remain focused in some key areas as we recover from the aftermath of the pandemic. We are fortunate to have incredible employees and are honoured once again to come together in person to celebrate with this year's recipients at the Annual General Meeting. We value the dedication and hard work of all BCCL employees. We are pleased to report that BCCL and CUPE negotiated a 4-year collective agreement in March 2023.

We would like to take this opportunity to thank all the families and people supported by BCCL for their understanding and patience this past year. We are thankful and appreciate all of our hard-working employees who are dedicated to making a difference in people's lives. Lastly, thank you to our funders, donors, members, volunteers, and partners in the community for your contributions and for your continued support. We look forward to continuing our work together in the coming year as we strive to create a more inclusive and supportive community for people who have an intellectual disability.



*Carmen Baker, President
and
Anne-Marie Hawkins, Executive Director*



Message from the Treasurer

The board is pleased to report that BCCL once again came in with a balanced budget for the year ending March 31, 2023.

The Ministry of Children, Community and Social Services funding increased by 14% due to the addition of permanent wage enhancement funding for support workers, expansion to community living supports through the ministry's (MYSLP) multi year supported living plan as well as various one-time fiscal and grant funding opportunities.

BCCL received Covid Residential Relief funding (CRRF) of \$399,810 to help offset costs associated with Covid-19. Partner Facility Renewal (PFR) funding of \$193,700 went towards health and safety projects at numerous properties. BCCL appreciates the support and guidance received from MCCSS this past year as well as the significant investments made towards direct support worker wages, residential expansion and health and safety projects.

The Ministry of Community and Social Services provides funding, known as Passports, directly to individuals and their families to purchase day support services. The ministry increased Passport funding this past year by 10%. As BCCL day support options gradually opened up throughout Brampton and Caledon, there was a need to increase program fees for the first time in 6 years to help offset rising costs and to continue to provide high quality day supports to participants and their families.

The Early Childhood department continues to expand in response to the continuous growth in Peel. The Region of Peel funding increased by 16% to allow for more Resource Consultants to be hired by BCCL to promote and facilitate the inclusion of children with special needs in community childcare centres throughout Brampton and Caledon. Thank you to the Region of Peel for this additional investment that will ensure that more children will get the support they need at an early age.

The United Way of Greater Toronto funding allows people supported and living in Caledon the opportunity to realize their goals and connect to various activities in their community with a view of continuing those activities independently. Thank you to the United Way of Greater Toronto for their ongoing support and investment to the Connections program.

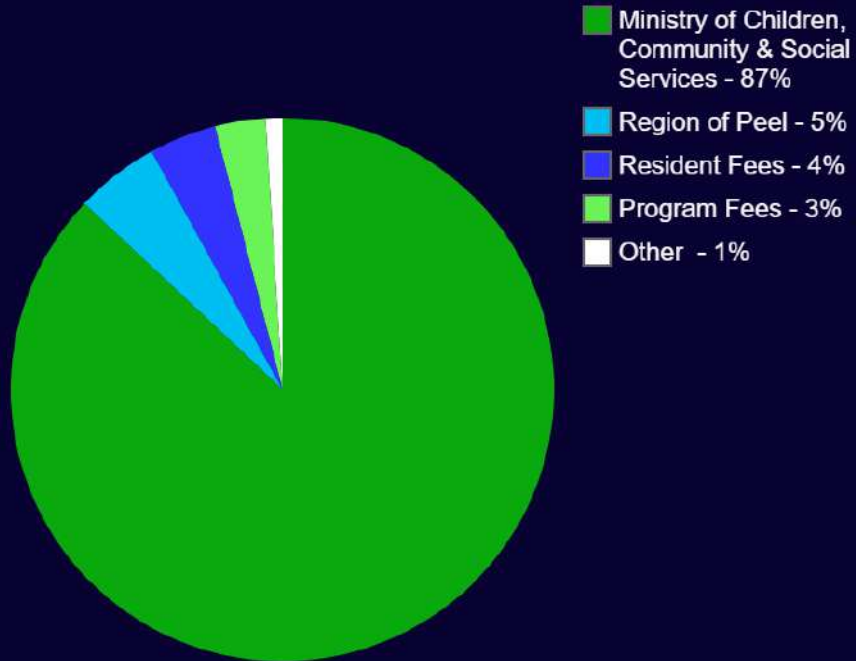
Thank you to all our funders and donors for your generous contributions and on-going support.

Cameron Craig, Treasurer



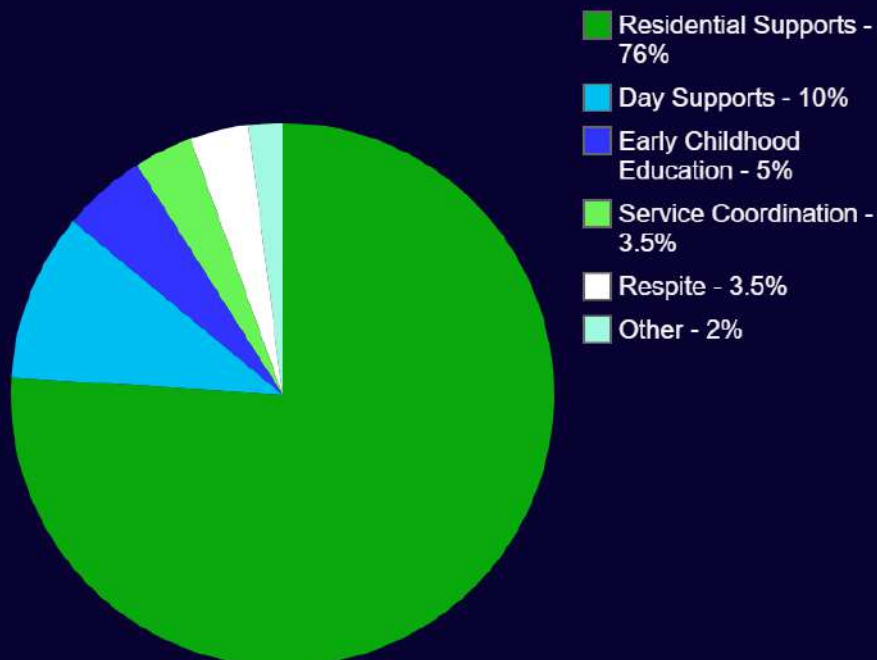
Financial Overview 2022-2023

2022-2023 REVENUE



imgflip.com

2022-2023 EXPENSES



imgflip.com

Mission, Vision & Values

OUR VISION

A community that respects and supports the dignity, inherent value, and rights of all people to participate, contribute and share in all elements of community life.

OUR MISSION

To support and empower people who have an intellectual disability, in partnership with their families and the community, to lead enriched and meaningful lives.

OUR VALUES

RESPECT AND DIGNITY

Respecting the inherent dignity and value of all people and enabling individuals to achieve their unique potential, free from discrimination and abuse.

INCLUSION

Building an inclusive community that values the participation and contribution of all its members and expands opportunities for people to achieve their goals and aspirations.

ORGANIZATIONAL EXCELLENCE

Excellence, demonstrated through leadership, accountability, education, partnership building and innovation.



Strategic Goals

ENHANCE SUPPORTS AND SERVICES

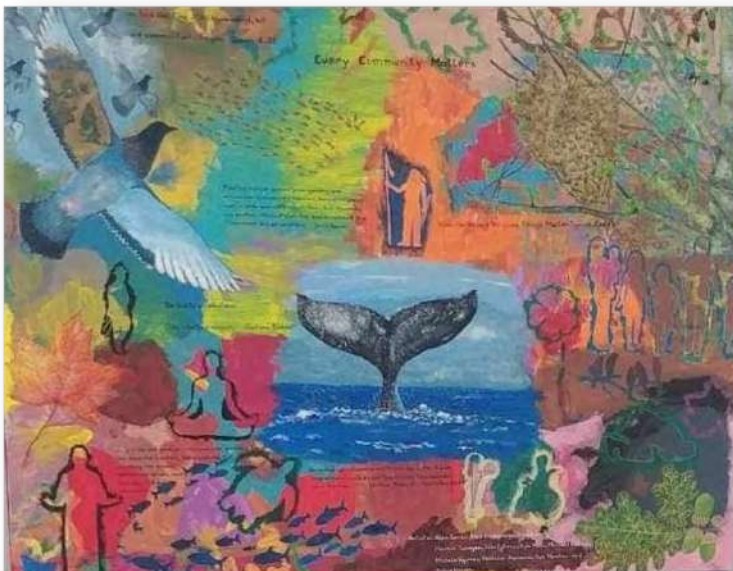
- Promote advocacy and inclusive practices that foster choice, dignity, and respect of people to lead enriched and meaningful lives.
- Enhance value-based supports and services that strive for the highest level of excellence.
- Focus on innovative ways to use technology to expand opportunities for people.

BUILD AND STRENGTHEN PARTNERSHIPS AND RELATIONSHIPS

- Build on existing community partnerships and create new partnerships with a view to continuously enhance supports and services.
- Develop strategies with families, partners and stakeholders that support innovative person directed planning and programming.
- Expand the organization's profile in the community.

ORGANIZATIONAL DEVELOPMENT AND ENRICHMENT

- Strive to be an employer of choice.
- Expand opportunities for learning and professional development.
- Use technology to streamline processes and create efficiencies.



Every Community Matters

Collaborative art project by Fisherman Drive representing the presence of communities not just for humans but in nature also making a more harmonious world.

Community Living Supports

Brampton Caledon Community Living supports one hundred and fifty-five people in a variety of residential settings, located throughout Brampton and Caledon. Choice and inclusion continue to be the foundations of support, ensuring all people are supported to live the life they dream of in their community.

Community Living Support (CLS) teams assist people to independently navigate through their individual life journey. Person-centred planning is an essential part of the journey and is ongoing to aid in the development of each person's unique goals and aspirations. Goals are endless but may include recreational, cultural, employment and educational aspirations. Family and friends who are important in the person's life work together with the CLS support teams to assist the person to identify and achieve their goals.

There continues to be a rise in support needs due to individuals who are aging and/or living with complex health needs. Sixty percent of residents are now 50 years of age and older. In collaboration with families, doctors, gerontology specialists and BCCL's support teams, a tailored and creative approach is taken, ensuring everyone's support and medical needs are met at all stages of life. BCCL continues to focus on home improvements that make all homes more accessible as well as inviting.

I am extremely satisfied with the staff, how they treat Lori like a family member and the cleanliness of the house. Staff are so friendly and welcoming.



Happy 90th to Albert

This past February, a momentous event occurred! Our own Albert celebrated the day of his birth 90 years ago in 1933. In his long life he has been through highs and lows, led an interesting life and become an inspiration and example to many.

For his first six years he lived at home with his parents, but shortly after his medical diagnosis he moved into the Huronia Regional institute. He spent the next 60 years of his life at Huronia, but that didn't stop him from continuing to grow and develop throughout life.

Notably, Albert developed a passion for art and the romance of the rails. Albert loves to travel by train and particularly enjoys relaxing on a trip through the countryside as nature streams past the window of his passenger car, fascinated by the seasonal changes he can see from these journeys.

Alberts artistic endeavors show a great attention to detail, and his artwork caught the eye of exhibitors in Ottawa. This talent gave him an opportunity to travel to our nation's capital to take part in an event where his intriguing pieces were on display.

In December of 2007 Albert moved into his beautiful home on Valleyside Trail and has been living happily there since that day. Despite the numerous challenges in his life, Albert is and has always remained the definition of class, grace, and resilience.

In the words of Maya Angelou "I can be changed by what happens to me. But I refuse to be reduced by it." Albert has shown us all the truth in these words, and we have been privileged not only to have celebrated this day with him, but also to get to know the man he is is after these many years together.



Community Participation Supports



13 Fisherman and 19 Rutherford Community Participation Support locations were excited to welcome back more participants over the past year, providing supports to 58 participants between the two locations. While numbers remained reduced, the small group cohort model was very successful overall for participants, allowing for a unique opportunity to focus on individual interests and goals.

Both locations offered a wide range of on-site activities including literacy, math skills, arts and crafts, fitness and trivia to name a few. On-site programming is further enhanced by taking part in a selection of the virtual class offerings throughout the day.

Opportunities to access the community, taking advantage of the many beautiful parks and trails within Brampton and exploring local attractions like PAMA have been met with enthusiasm from participants and support workers alike.

This year, Connections reopened their doors and welcomed back people who had been looking forward to spending time with friends and being active in their communities. Currently, Brampton Connections has 28 participants registered and Caledon Connections has 24 participants registered.

This initiative is registration based, allowing for people to choose from a new selection of activities every three months. The objective for the Connections program is to provide opportunities for participants to access activities in their local communities while pursuing their recreational, social, and educational goals.

The two Connections locations in Caledon and Brampton have offered a wide variety of classes and activities since re-opening in the fall, including both pre-Covid favourites and innovative new programs. Classes include art, yoga, cooking, kickboxing, dance, sports, drumming, lessons at Music with Tisho's, and volunteering at Studio 89 or the animal shelter.

We continue to seek partnerships with local businesses to enhance our program offerings. At Studio 89, a social enterprise, people gained valuable experience learning the skills needed to run a coffee shop including everything from pulling espresso shots, clearing tables, to watering plants. A new Bolton business, the Real Joy House, welcomed participants to their space to play board games, ping-pong, billiards and air hockey.



Community Participation Supports Virtual Programs

Community Participation Supports (CPS) Virtual Programs continue to be successful in supporting the social and recreational goals of people supported from the comfort of their home.

CPS Virtual Programs are offered to all BCCL families, free of charge and at various times throughout the day. On average, the schedule includes between 18 and 24 programs per week. The sessions provide a wide range of programs including fitness, culinary, educational, social, visual and creative arts.

Special events are coordinated in partnership with community partners like the Peel Regional Police for cyber safety, Brampton Fire to learn about fire safety in the home and healthy relationships with Peel Behavioural Services.



CPS Explore



CPS Explore is a new and exciting Community Participation initiative that started in May 2023.

Currently CPS Explore supports 28 people in Community Living Supports to actively participate in their community and work towards achieving their personal social and recreational goals.

Service Coordination

The Service Coordination department provides support and services to families throughout Brampton and Caledon who have a family member with a diagnosis of autism and/or a developmental disability. This past year, service coordinators provided services and supports to more than 1100 families of children and adults.

Service coordinators assist families to plan and apply for much needed support and services. Thankfully many community programs which were previously closed due to the pandemic have now resumed services. Service Coordinators share helpful resources with families, help to navigate services in the community, and advocate for inclusion. Supports are wide ranging and tailored to the family's needs.

Service coordinators continue to work collaboratively with community partners such as Peel Crisis Capacity Network, Community Network of Specialized Care, Brampton Parks and Recreation, Town of Caledon, and Peel Behavioural Services.

My Service Coordinator, Chris Fryer, goes out of his way to call me in response to any concerns I may have at a given time, even outside of his paid hours. He is patient, kind, caring, and knowledgeable.....

Respite

This past year, BCCL provided various respite services and support to over 600 children and adults. This includes direct funding allocation to families to assist with hiring a respite worker; The Zone, evening respite program for children with autism, the Medically Fragile and/or Technologically Dependent (MFTD) initiative as well as through various partnerships in the community.

The Zone initiative resumed in-person support and families, children and youth welcomed the opportunity to once again in fun activities. Virtual programs continued to be offered for those who were not yet comfortable meeting in-person.

The MFTD initiative is once more offering in-person support and services to families whose children have been deemed medically fragile and/or technologically dependent. The Community Inclusion Workers remained busy this past year providing families with virtual and 1:1 in-person respite supports. Many parents expressed their appreciation for the support their child received.

***The MFTD program was wonderful and helpful. It was amazing for my kids. There should be programs like this available in all regions.** Erum J.*

BCCL in collaboration with the Town of Caledon and Kerry's Place, resumed the social skills program, Fostering Independent Teens (F.I.T.) after a period of closure due the pandemic.

With the reopening of summer camps in 2022, BCCL was able to provide funding for 83 families to register for camp through our partnerships with the City of Brampton and the Town of Caledon.



Early Childhood Education Services

Brampton Caledon Community Living's Early Childhood Education (ECE) Service department is an active member of Peel Inclusion Resource Services (PIRS). PIRS is a partnership with Region of Peel, Community Living Mississauga, ErinoakKids and Every Mind. The ECE department actively promotes inclusion of children with special needs within our community childcare centers. Resource Consultants promote inclusion to assist children and families to achieve their personal goals and promote full participation of all children in childcare centres.

In 2022, the Resource Consultants provided services to 486 children and their families and provided support to 69 childcare centres and five home care centres.

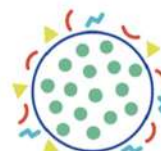
In January 2023 the ECE department received funding to hire one additional Resource Consultant, bringing the total to 17 Resource Consultants, enabling BCCL to support the increased demand for service.

As we look to the future, there are many anticipated changes within the Region of Peel. For example, the Canada Wide Early Learning and Childcare Plan (CWELLCC) has begun, and parents are happy to see a reduction in childcare fees. Currently, 95% of Peel childcare sites are enrolled in CWELLCC. With a reduction in childcare fees and the fact that Peel Region has been allocated 7,621 new childcare spaces by the end of 2026, there will be more demand for services and supports from families and childcare centres.

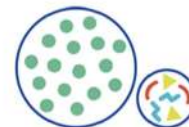
The Early Childhood Education Services department looks forward to another year of encouraging, advocating, and supporting children, families and childcare centres in Brampton and Caledon.



Inclusion



Exclusion



Segregation



Integration



Staff Service Award Recipients

5 Year Award Recipients

Abigail Stevens
Alceena Dunn
Bailey Ward

Dana Berry
Evelyn Owusu-Achaw
Nekeisha Robinson

Selena Pooran
Sarai Echeguia
Veron Tulloch

10 Year Award Recipients

Anju Katoch
Christina Christian
Denyse Botelho
Emem Eyo

Keycia Tomlinson
Latoya Gittens
Lincoln Powell
Murphy Johnson

Nicolas Aikins
Rose Hall
Shiva Mahabir

15 Year Award Recipients

Erin Duncan
Folashade Sadiq
Folashade Joseph
Ikechukwu Okwusiuno

Linda Oladele
Marilyn Ambrose
Mariwell Tesoro
Millicent Smith

Randy Scace
Ruth Oloye
Sheri Ash

20 Year Award Recipients

Claudette Phipps
Dolton Fraiser

Olubunmi Kemi
Rose Boakye

Sherrine Madar

45 Year Award Recipient

Rob Brownlee



Thank You to Our Members

Vikramjeet Aujla
Carmen Baker
David Burrows
Susan Burrows
Karen Calomino
Carson Coughlin
Cameron Craig
Sandra Crowe
John Crowe
Jeff Crowe
Rick Dorian
Sebastien Dorian
Karen Down
Bryan Gordon
Don Graff

Marilyn Graham
Susan Greenwood
Alijha Greenwood
Carol Haley
Helen Kenny
Arden Kenny
Matthew Logan
Judy Lowe
Anis Malik
Momin Malik
Shirley Nash
Brenda Poisson
Donald Robyn
Connie Robyn

Linda Russell
Ron Sanderson
Sylvia Scott
Samuel Scott
Claudette Slattery
Harold Slattery
Ricky Slattery
Darrell Slattery
David Spencer
Lorna Spencer
Sean Travis
Colm Traynor
Debbie Werden
Alexandra Whittaker

Thank You to Our Donors

Darlene Avram
Patrick Dorian
Jane Freed
Merlyn Fullerton
Don Graff
Carol Haley
Kendall AG

David G. Lake
Clement Lam
Donnaleita Logan
Momin & Anis Malik
Shirley Nash
Brenda Poisson
Donald Pringle

Debra Rose
Harold & Claudette Slattery
Lorna & Walter Spencer
Eileen Traynor
Debbie Werden
Carolyn Wingate

Board of Directors 2022-2023

Carmen Baker - President
Alexandra Whittaker - Vice President
Cameron Craig - Treasurer
Carson Coughlin - Secretary
Karen Calomino

Sean Travis
Vikramjeet Aujla
Ron Sanderson
Susan Greenwood



Connect with us:



@BramptonCCL



@bramptoncaledoncl



Facebook.com/BramptonCaledonCommunityLiving



www.bramptoncaledoncl.ca



34 Church St. W. , Brampton L6X 1H3